

# MULTIPIN PXN12c

## PRODUCT FEATURES



### Metal Casing

Provides excellent durability and protection.

### IP65/IP66 Watertightness

Environmental rating is achieved as soon as the plug is latched to the receptacle. There is no additional rings to tighten.

### Lid

Provides additional protection from harsh environments.

### Recessed Contacts

Provides IP2X protection from live electrical parts.

### Locking Provision

Turn triangular screw with special tool (provided) to prevent plug removal.

### Spring Loaded Butt-Style Contacts

Ensures optimal contact force and superior electrical performance over thousands of operations.

### Silver-Nickel Contacts

Silver-nickel contact material provides superior conductivity, durability and corrosion resistance.

## Hazardous Location Listings

ATEX
II 2 GD Exe IIIC Gb Ex tb IIIC Db Suitable for Zone 1 & 2 (gas) 21 & 22 (dust)
Ex ia or ib IICT6 Gb
IECEX LCIE 14.0041X/LCIE 07 ATEX 6070X

### Highlighted Feature

- Crimped Contacts**  
 PXN12c devices now feature contacts that can be crimped or soldered. Each device is supplied with 13 contacts so that the product can be set up to suit application needs.

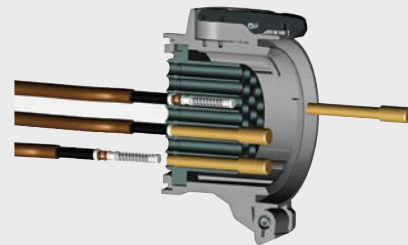
## Simple Assembly and Disassembly

DSN37c shown



### Assembly

To insert contacts when they have been wired is simple. Push wired contact into rear of insulator until it stops to complete the installation.



### Disassembly

To remove, use the tool provided. Push tool from front onto contact until tool stops. Contact is then released at rear of insulator.

# PXN12c Hazardous Location Multipin – 10A

Devices rated for hazardous locations are not returnable.

**Connector**  
(female recept w/handle)



or

**Receptacle/Angle**  
(female)



or

**Recept/Angle/Box**  
(female)



North American UL/CSA Configurations

Voltage	Polarity	Cable Range	Part # Metal	Part # Metal	Part # Metal
220V	11P+G	.35 - .63"	06-A3001-25M	06-A7001	06-A0001-25M
220V	11P+G	.47 - .82"	06-A3001	06-A7001	06-A0001

For international configurations (IEC/CE) visit [meltric.com/international-catalog](http://meltric.com/international-catalog) or contact customer service at 800.433.7642.

**Plug**  
(male inlet w/handle)



or

**Inlet/Angle**  
(male)



or

**Inlet/Angle/Box**  
(male)



North American UL/CSA Configurations

Voltage	Polarity	Cable Range	Part # Metal	Part # Metal	Part # Metal
220V	11P+G	.35 - .63"	06-A1001-25M	06-A9001	06-A6001-25M
220V	11P+G	.47 - .82"	06-A1001	06-A9001	06-A6001

For international configurations (IEC/CE) visit [meltric.com/international-catalog](http://meltric.com/international-catalog) or contact customer service at 800.433.7642.

**Ratings**

- **Voltage**  
220 VAC or VDC
- **Amperage Ratings**  
10A Not for disconnection of a live circuit
- **Environmental Ratings**  
IP65/IP66
- **Temperature Range**  
Min -40°F/Max 131°F
- **Wiring Capacity**  
Min 16 AWG Max 14 AWG  
\* Based on THHN wiring connection type solder
- **Terminal Type**  
Solder/Crimp
- **Applicable Standards**  
ATEX, IECEx

**ACCESSORIES**

PROTECTIVE CAP



01-2A126

EUROPEAN CRIMPING TOOL



61-CA500

BAG OF 13 FEMALE CONTACTS



01-AA213

Includes insulation sleeves and ferrules

MULTI-CONTACT REMOVAL TOOL



61-CA593

CRIMPER TOOL (Greenlee or equal)



4CN30

BAG OF 13 MALE CONTACTS



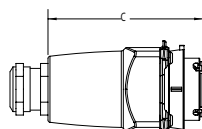
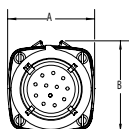
01-AA113

Includes insulation sleeves and ferrules

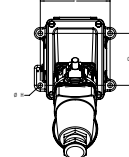
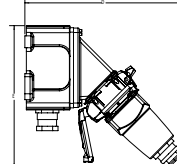
## PXN12c DIMENSIONS – Provided in inches

Dimensions are for reference only and may change depending on accessories used. For precise dimensions contact MELTRIC Engineering.

**Plug**



**Wall box/angle/receptacle/plug**



PRODUCT	A	B	C	D	E	F	G	H
PXN12c	2.3	2.42	4.09	8.37	7.54	3.7	2.76	0.26