

# ACCESSORIES/OPTIONS



AUXILIARY/PILOT CONTACTS.....	P. 250
ADDITIONAL WATERTIGHTNESS .....	P. 251
LID CONFIGURATIONS .....	P. 252
PLUG CAPS.....	P. 253
PAWL OPTIONS.....	P. 254
AUXILIARY SWITCHES.....	P. 255
SELF-EJECTING DEVICES .....	P. 256

# AUXILIARY/PILOT CONTACTS

Auxiliary/pilot contacts can operate secondary circuits on the inlet or receptacle side of the circuit. They make last and break first when the plug is engaged or disengaged from the receptacle. To order a device with auxiliary/pilot contacts, add the appropriate suffix numbers listed to the right. Amperage ratings for the auxiliary/pilot contacts depend on the device size and operating voltage (see table below).



Auxiliary/Pilot Contacts

Switch-rated plugs & receptacles with auxiliary/pilot contacts can make the operation of a facility safer and more efficient by facilitating the use of advanced control schemes. They allow facilities to:

- ▶ **Quickly reconfigure or change-out processing equipment.** – The need for hard-wiring or multiple plug connections is eliminated.
- ▶ **Reduce equipment costs.** – The need for separate connections for the auxiliary/pilot contacts is eliminated.
- ▶ **Simplify the monitoring of key parameters.** – Thermistors on a motor driving a critical process pump can communicate temperature problems via auxiliary/pilot contacts in the Decontactor.
- ▶ **Communicate alarm signals or turn off equipment.** – When a motor is disconnected or unplugged, the auxiliary/pilot contacts can convey a signal that will de-energize the motor starter.

## Auxiliary Contact Amperage Ratings

Product	DSN30 DSN60	DSN150	DS20 DS30 (DS60 2 Aux, DS100C 2 Aux)	DS100, DS200	(DS60 3+4 Aux, DS100C 3+4 Aux)	DXN30 DXN60	PFQ300	PF (all sizes)	DR30 DR50 (DR100 2 Aux)	DR150 DR225 DR250 DR400	(DR100 3+4 Aux)	SP	SPeX	DS7c	DR7c
120 VAC	6A	1.5A	6A	1.5A	3A	5A*	7A	10A*	6A	1.5A	3A	0.6A**	-	-	-
240 VAC	3A	0.75A	3A	0.75A	1.5A	5A*	5A	10A*	3A	0.75A	1.5A	0.3A**	6A* (220V max)	-	5A*
480 VAC	1.5A	0.38A	1.5A	0.38A	0.75A	5A	2A*	10A*	1.5A	0.38A	0.75A	-	6A* (220V max)	5A* (400V max)	-
600 VAC	1.2A	0.30A	1.2A	0.30A	-	5A* (550V max)	2A*	10A*	1.2A	0.30A	0.60A	-	-	5A* (400V max)	-

\* Rating is not UL or CSA listed

\*\* Rating is not UL listed.

## Ordering Information

To order on a device, add the appropriate suffix to both the inlet and receptacle part numbers.

Product	DSN				DS								DXN	PFQ	PF				DR						DR7c DS7c	SP
	20	30	60	150	20	30	60 Poly	60 Metal	100C Poly	100C Metal	100	200			30	60	300	300	400	600	30	50	100 Poly	100 Metal		
2 contacts	-972	-972	-972	-262	-972	-972	-972	-972	-972	-972	-262	-972	-972	-972	-	-	-	-	-972	-972	-972	-972	-262	-972	-172	Standard 4
3 contacts	-	-	-973	-263	-	-973	-263	-263	-263	-263	-263	-	-	-	-	-	-	-	-	-973	-263	-263	-263	-	-173	-
4 contacts	-	-	-974	-264	-	-974	-264	-264	-264	-264	-264	-174	-	-	Standard 8	Standard 4	Standard 4	Standard 4	-	-974	-264	-264	-264	-174	-	-
5 contacts	-	-	-	-975	-	-	-	-	-	-	-975	-	-	-	-	-	-	-	-	-	-	-	-975	-	-	-
6 contacts	-	-	-	-976	-	-	-	-	-	-	-976	-976	-	-	-	-	-	-	-	-	-	-	-976	-976	-	-

## Replacement Auxiliary Contacts

Product	DSN			DS				DR			
	30	60	150	20	30	60	100C	30	50	100	150
Male contact	61-3A011	61-6A011-264	61-9A011-219	31-1A011-30	61-6A011-262	31-6A011-172	31-6A011-172	31-1A011-30	61-6A011-262	31-6A011-172	61-9A011-219
Female contact	61-3A021	61-6A021-264	61-9A229	31-1A021	61-6A021-262	31-6A229	31-6A229	31-1A021	61-6A021-262	31-6A229	61-9A229

# ADDITIONAL WATERTIGHTNESS

For additional water protection when the inlet and receptacle are mated the following Type 4X option may be ordered for DS or DR models.

## Type 4X Watertightness

Type 4X waterproofing is used for applications where connectors, plugs, and receptacles are subjected to water pressure. A gasket is added to the inlet and the receptacle lid is made to normally close.

*Example:*

*To order on a device add suffix -4X to the inlet and receptacle part number.*

*DS20 Poly Inlet 2P + E = 33-18162-4X*



## To Order Gaskets Separately

Model	DS								DR					
	20	30	60 Poly	60 Metal	100C Poly	100C Metal	100 Metal	200	30	50	100 Poly	100 Metal	150 Metal	250
Type 4X	31-1A056	31-3A056	31-6A066	39-6A066	31-6A066	39-6A066	31-9A066	39-2A056	31-1A056	31-3A056	31-6A066	39-6A066	31-9A066	39-2A056

# LID CONFIGURATIONS

There are four standard open lid configurations depending on the model and size of the device: 180° open, 120° open, 90° open and detached. Optionally, customers can order lids that are normally closed, or if the lid opens to 120° as standard, it can be ordered to open 180° for flush mounted inlets (DS & DR only).

## Standard Lid Configurations



### 180° OPENING LIDS

#### Standard for:

DSN20, DSN30, DSN60, DSN 150 poly  
DS20, DS30, DS60 Poly, DS100C poly, DS100 poly  
DR30, DR50, DR100 poly, DR150 poly  
DSDC1, DSDC3, DSDC6 poly, DSDC9 poly

### 120° OPENING LIDS

#### Standard for:

DX20, DX30, DX60, DX100  
DXN20, DXN30, DXN60

### 90° OPENING LIDS

#### Standard for:

DSN150 metal  
DS60 metal, DS100c metal, DS100 metal, DS200  
DR100 metal, DR150 metal, DR250, DR400  
DSDC6 metal, DSDC9 metal, DSDC2 metal  
DS60, DSN150 Hazardous Rated

### DETACHED LIDS

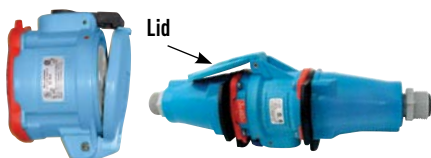
#### Standard for:

DB30, DB60, DB100  
PFQ300, PF300, PF400, PF600  
SP  
DXA1  
DXN25c, DXN37c

## Optional Lid Configurations

### Closed Lid

Designed for female devices only. A normally closed lid configuration is available for applications where it is desirable to protect the receptacle face from dust, debris, or potential damage. This option provides a lid that will automatically close to a pre-latch position after removal of the plug. The lid must still be latched manually in order to achieve rated watertightness.



Normally closed lid configuration is recommended for cord to cord applications to keep the lid tucked in and avoid damage.

### CLOSED LID

#### Available as option on:

DSN (All sizes)  
DS100 (All sizes)  
DR (All sizes)  
DN (All sizes, except DN7c)

#### Examples:

To order a DSN, DS, DR, or DN device with a closed lid add **-NC** to the receptacle part number.

DS20 Poly receptacle 2P+G = 33-14162-NC

To order a DXN device with a closed lid add **-R** to the receptacle part number.

DXN receptacle 2P+G = 22-14162-R

### 180° Open Lid for Flush Mounted Inlets (DS, DR & DXN devices only)

When ordering an inlet that will be mounted directly flush against a wall or surface without an angle or box, the connector (receptacle + handle) may require the lid to be set for 180° opening.



### 180° OPEN LID FOR FLUSH MOUNTED INLETS

#### Available as option on:

DSN150 metal  
DS60 metal, DS100c metal, DS100 metal, DS200  
DR200 metal, DR150 metal, DR250  
DXN20, DXN30, DXN60

#### Example:

To order this configuration add suffix **-180** to the receptacle part number.

DS100 Metal Receptacle 3P+N+G = 37-94047-180

# PLUG CAPS

## Protective Neoprene Plug Caps

Neoprene caps provide an extra level of protection from dust, dirt, and rough handling for male plugs.

Watertight

Non-Watertight\*



Typical for DSN, DS20, DS30, DS60, DS100C, DR30, DR50, DR100, DXN

Typical for DS100, DS200, DR150, DR250

Typical for DB and DN devices

Typical for PN devices

## Padlockable Plug Caps

Padlockable caps can be locked in place to prevent unwanted removal.



Typical for: DSN20, DSN30, DSN60, DS20, DS30, DS60, DS100C, DR30, DR50, DSDC1, DSDC3, DSDC6

Typical for: DS60, DS100C, DS100, DS200, DSN150, DR100, DR150, DR250, DSDC9, DSDC2

## Ordering Information

Model	Neoprene Plug Cap
DSN20	61-1A426
DSN30	61-3A426
DSN60	61-6A426
DSN150	35-9A426
DS20	31-1A426
DS30	31-3A426
DS60	31-6A426
DS100C	31-6A426
DS100	35-9A126
DS200	35-2A126
DB30	873A126
DB60	876A126
DB100	879A126
DXN20	221A426
DXN30	223A426
DXN60	226A426
DR30	31-1A426
DR50	31-3A426
DR100	31-6A426
DR150	35-9A126
DR250	35-2A126
DN9c	191A126
DN20c	196A126
PN20	01-2A126

## Ordering Information

Model	Padlockable Plug Cap
DSN20	61-1A826*
DSN30	61-3A826*
DSN60	61-6A826*
DSN150	DS9MC (Alum)
DS20	DS1PC (poly)/DSDC1
DS30	DS3PC (poly)/DSDC3
DS60	DS6MC (Alum)/DS6PC (Poly)/DSDC6 (Poly)
DS100C	DS6MC (Alum)/DS6PC (Poly)
DS100	DS9MC (Alum)/DSDC9
DS200	DS2MC (Alum)/DSDC2
DR30	DS1PC (poly)
DR50	DS3PC (poly)
DR100	DS6MC (Alum)/DS6PC (Poly)
DR150	DS9MC (Alum)
DR250	DS2MC (Alum)
DR400	DS2MC (Alum)

\* Maintains IP66/IP67 and Type 4X protection

**Notes:** A 5/16" diameter lock/pin is needed for proper operation. Do not substitute a smaller diameter lock/pin.



\*The lockout hole is not completely sealed off by the neoprene caps or the DS\_PC and DS\_MC caps. If environmental protection is needed while the plug is disconnected, the inlet should be ordered without the standard hole.

Example:

To order an inlet without a lockout hole add suffix -A155 to the inlet part number.

DS20 Poly inlet 2P+G= 33-18162-A155

# PAWL OPTIONS

## Mushroom Pawl

The mushroom pawl is available as an alternative to the standard pawl. It is ideal for a quick disconnection of motors and other equipment, or in areas where employees use gloves and it is difficult to operate the standard pawls. The button has a red "stop" label for easy recognition.

*Example:*

To order on a receptacle add suffix **-375** to the receptacle part number.

DSN20 poly receptacle 2P+G=63-14162-**375**



**Available on:**

DSN, DS, DR and DN devices only

## Locking Mushroom Pawl

Locking mushroom pawls are available that include a screw which can be tightened to "lock" the pawl in place thus preventing release of the plug or the lid.

*Example:*

To order on a receptacle add suffix **-845** to the receptacle part number.

DS30 poly receptacle 3P+G=33-34163-**845**



**Available on:**

DSN, DS, DR and DN devices only

## Padlockable Mushroom Pawl

A padlockable mushroom pawl can be provided with a .32" hole that enables the lid to be locked closed, prohibiting access to the receptacle. Lockout Pin sold separately.

*Example:*

To order on a receptacle add **-375-843** to the receptacle part number.

To order a lockout pin order part **LP-843**.

DS30 poly receptacle 3P+G=33-38043-**375-843**



Optional pin sold separately.

**Available on:**

DSN, DS, DR and DN devices only

**Notes:** A 5/16" diameter lock or lockout pin is needed for proper operation. Do not substitute a smaller diameter lock/pin.

## Padlockable Standard Pawl

Standard pawls can be provided with a .32" hole that allows the lid of the receptacle to be locked closed or alternatively the plug can be locked in the connected position. Lockout Pin sold separately.

*Example:*

To order on a receptacle add suffix **-843** to the receptacle part number.

To order a lockout pin order part **LP-843**.

DSN20 poly receptacle 2P+G=63-14162-**843**



Optional pin sold separately.

**Available on:**

DSN, DS, DR and DN devices only

**Notes:** A 5/16" diameter lock or lockout pin is needed for proper operation. Do not substitute a smaller diameter lock/pin.

## Metal Pawl

Metal pawls are standard with metal receptacles only. If you prefer a metal pawl on a poly receptacle, add suffix **-824** to the poly receptacle part number.

*Example:*

DS60 poly receptacle 3P+G=33-64163-**824**



**Available on:**

DSN, DS, DR and DN devices only

# AUXILIARY SWITCHES

Female receptacles/connectors with up to 3 poles/4 wires are available with an optional auxiliary switch for operating secondary circuits on the line side of the circuit. The auxiliary switch is rated at 5A and includes one set of NO and one set of NC contacts. With the three phase devices the neutral contact of the plug operates the switch which is located in the neutral contact position in the receptacle. With the single phase units the third phase contact on the plug operates the switch which is located in the third phase contact position in the receptacle.



## Examples:

Order a receptacle with an auxiliary switch by adding suffix **-270** to the receptacle part number.  
DSN30 Poly Receptacle 3P+G = 63-34043-**270**

If the receptacle is 3 pole/4 wire, the mating plug must be ordered as a 4 pole/5 plus the suffix **-NNF** should be added.  
DSN30 Poly Inlet 3P+N+G = 63-38047-**NNF**

If the receptacle is 2 pole/4 wire (with neutral) the mating plug must be ordered as a 4 pole/5 wire and the suffix **-3NF** must be added.  
\*DSN30 Poly Inlet 2P+N+G = 63-38076-**3NF**

**Notes:** Devices ordered with auxiliary switch option are not UL/CSA listed.



# SELF-EJECTING DEVICES

## General

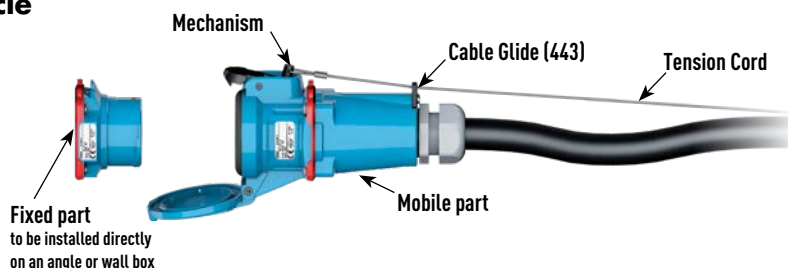
Self-ejecting devices protect equipment from damage caused when mobile equipment is accidentally moved without disconnecting power. Self-ejecting systems are designed to automatically release the plug or connector when tension is detected by a tension cord attached between the pawl and the power cable.

## Applications

Self-ejecting devices are commonly used on truck hook-ups, cranes, railroad cars, refrigerated food carts, delivery vehicles and other portable equipment.

## Self-Ejecting Female Connector/Receptacle

For self-ejecting female connectors, the standard pawl on the connector is replaced by a "shark's fin" pawl that is attached to the power cable via a tension cord. If the connected equipment is moved, the tension cord lifts the shark's fin pawl and the connector is released before damage can occur.



### Available on:

DSN (All sizes)

DS (All sizes, except DS200)

DN9c\*, DN20c\*

### How To Order:

To the female receptacle, add suffix **-354**  
To the handle part number, add suffix **443**

#### Example:

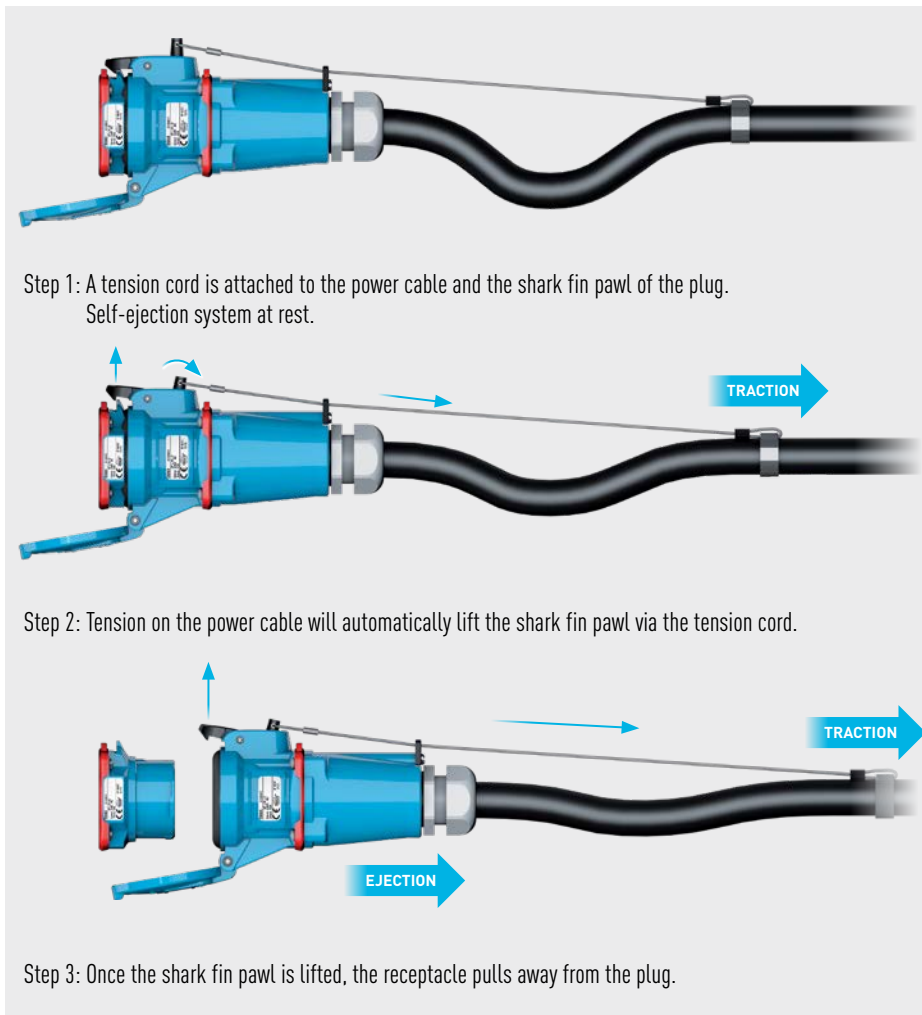
To order a DSN30 self-ejecting receptacle and poly handle (3/4" NPT), the part numbers would be:

Receptacle: 63-34043-354

Handle: 512PON07443

\* For DN9c and DN20c ordering, use suffixes listed in DN9c and DN20c section

**Notes:** Self-ejecting devices are modified to allow straight insertion. This defeats the safety shutter and voids the device's switch-rating.



## Self-Ejecting Plug

For self-ejecting plugs, a shark's fin mechanism is added to the assembly and attached to the power cable via a tension cord. When tension is applied to the power cable, the tension cord lifts the shark fin mechanism, which in turn lifts the standard pawl on the receptacle and releases the plug before damage can occur.

### Available on:

DSN20, DSN30, DSN60

DS20, DS30, DS60, DS100C

DSN24c, DSN37c, DS7, DR7

### How To Order:

To the male inlet, add suffix **-338**

To the female receptacle, add suffix **-352**

To the handle part number, add suffix **443**

#### Example:

To order a DSN30 self-ejecting plug, receptacle and poly handle (3/4" NPT), the part numbers would be:

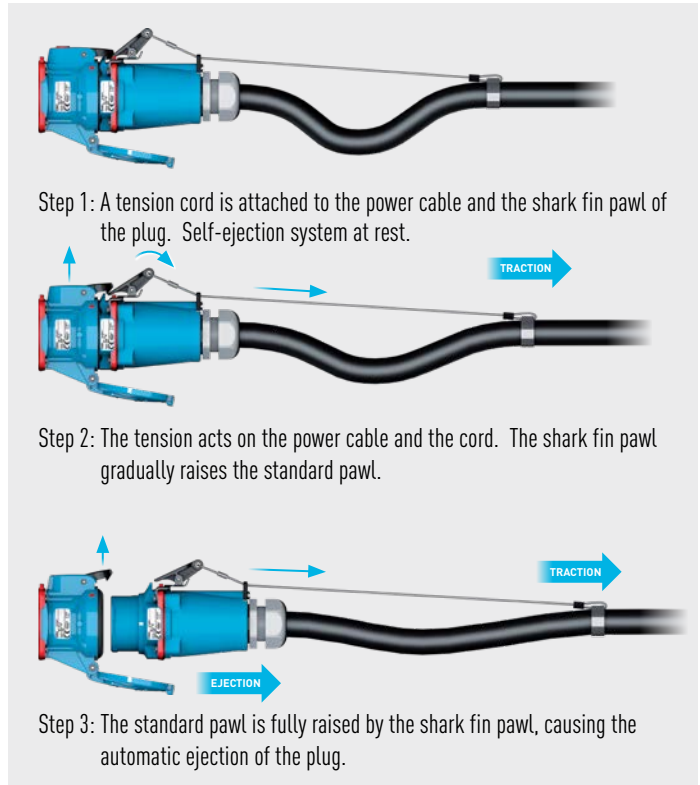
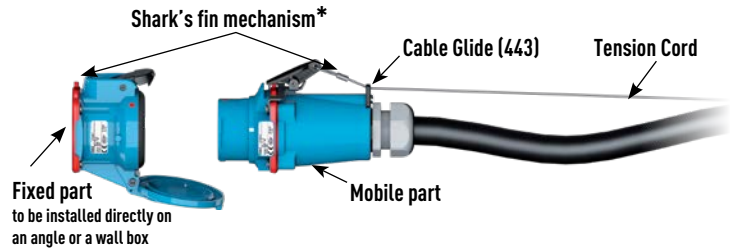
Inlet: 63-38043-338

Receptacle (straight Insertion): 63-34043-352

Handle: 512P0N07443

**Notes:** Self-ejecting devices are modified to allow straight insertion. This defeats the safety shutter and voids the device's switch-rating.

\* A new shark's fin mechanism with similar functionality will be implemented in 2018. Contact Customer Service or visit [meltric.com](http://meltric.com) for updates.



## Self-Ejecting Plug (DS100, DSN150, DS200, DN20c only)

For self-ejecting plugs on DS100, DSN150, DS200 and DN20c models, a cam mechanism is used in lieu of the 'shark-fin mechanism'. The principle of operation remains the same.

### How To Order:\*

To the male inlet, add suffix **-338**

To the female receptacle, add suffix **-352**

To the handle part number, add suffix **443**

#### Example:

To order a poly DS100 self-ejecting plug, receptacle and poly handle (3/4" NPT), the part numbers would be:

Inlet: 33-98043-338

Receptacle (straight Insertion): 33-94043-352

Handle: 515P0N07443

\* For DS200 ordering, use suffixes listed in DS200 section

\* For DN20c ordering, use suffixes listed in DN20c section

**Notes:** Self-ejecting devices are modified to allow straight insertion. This defeats the safety shutter and voids the device's switch-rating.



### Available on:

DSN150

DS100, DS200

DN20c

